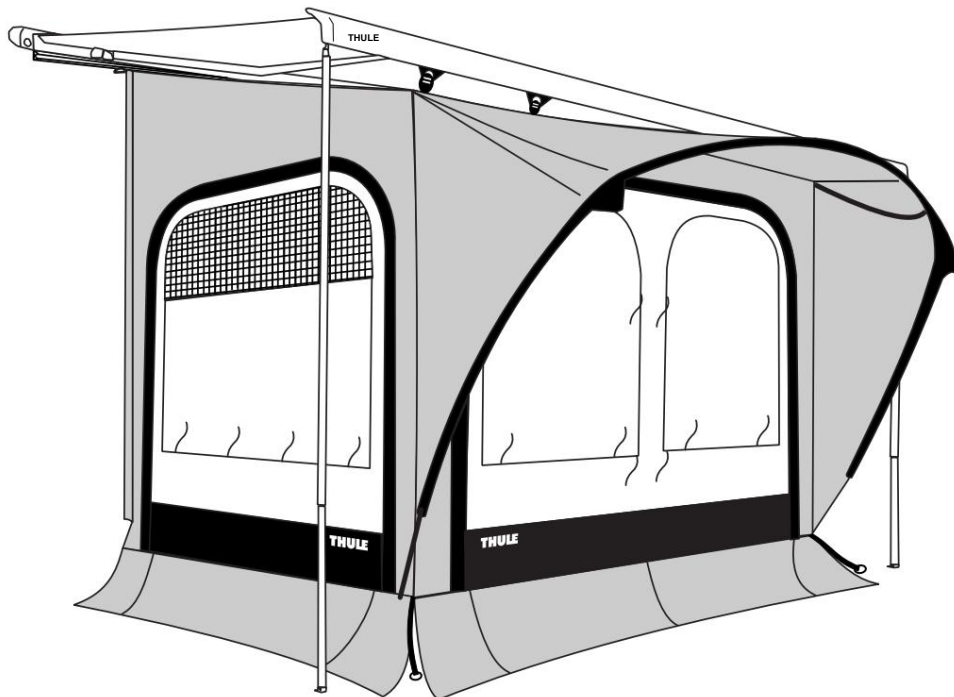




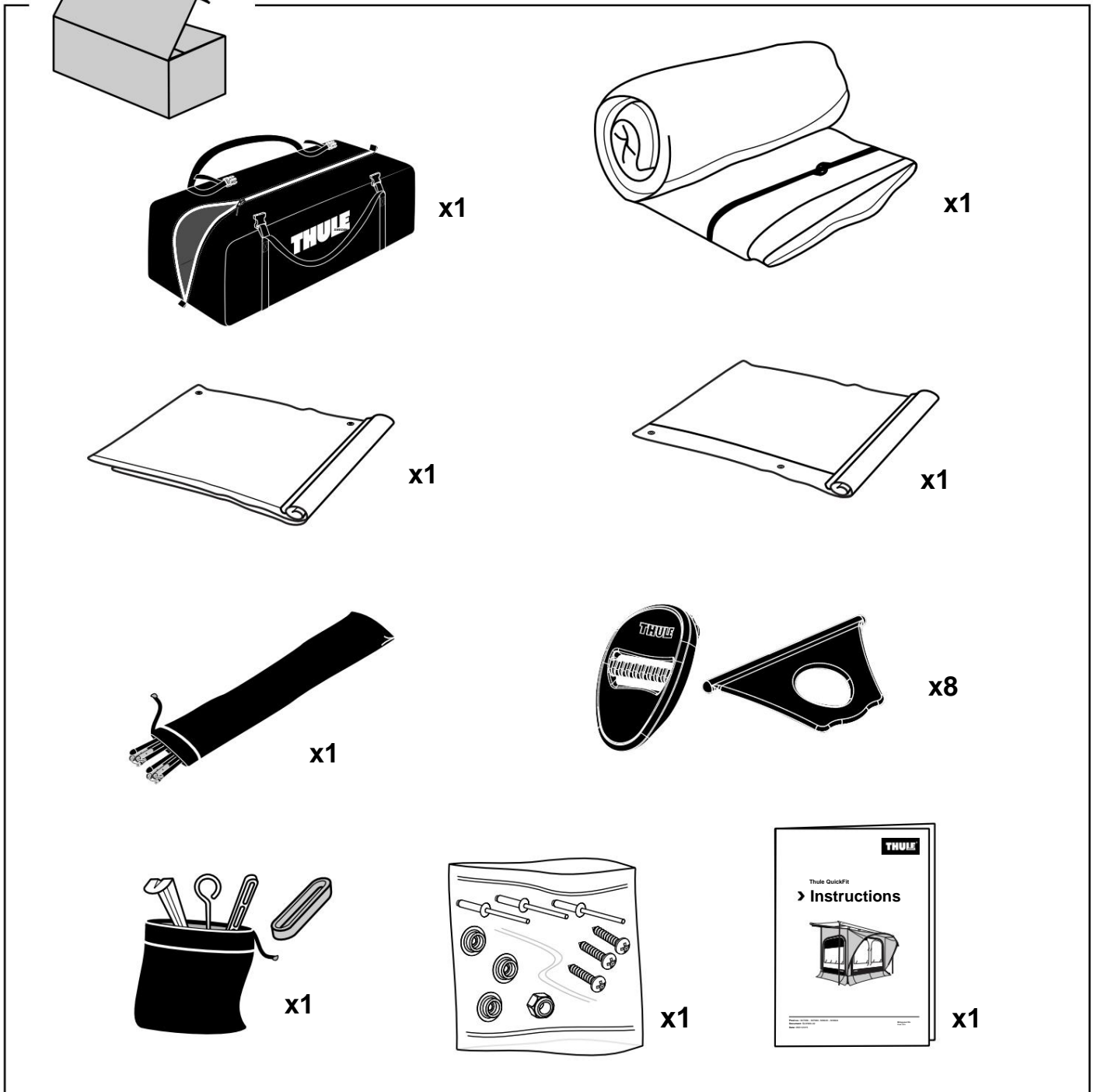
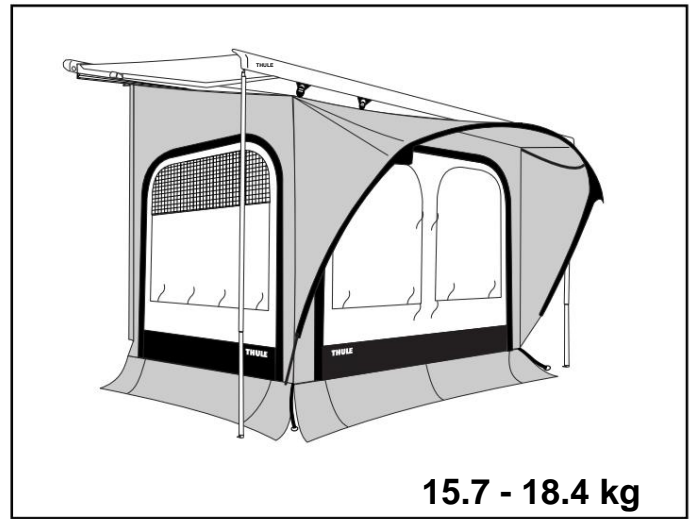
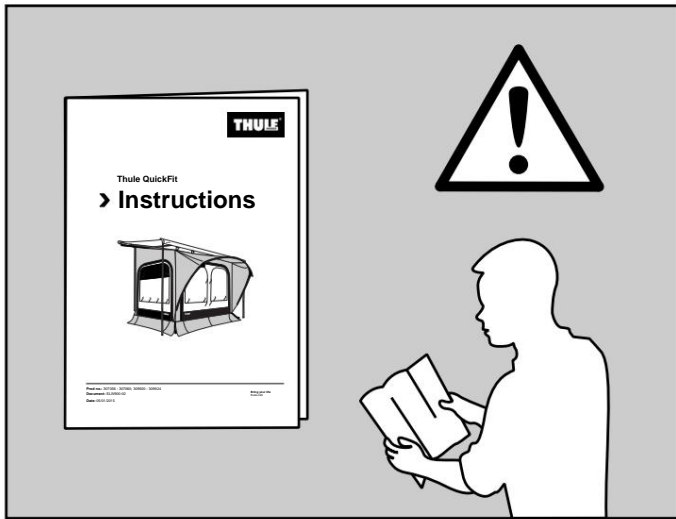
Thule QuickFit

➤ Instructions

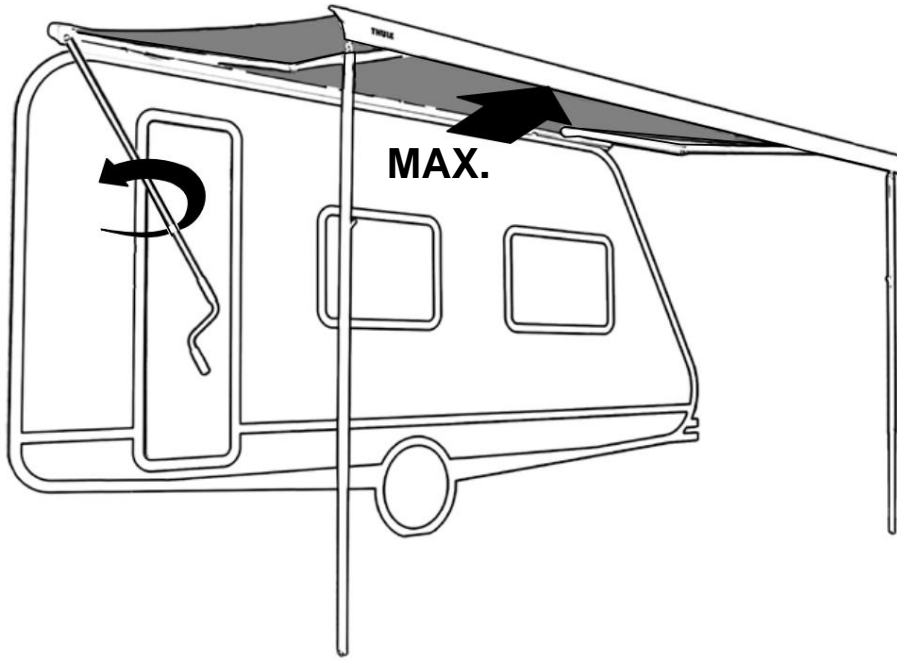


307056 - 307060; 309920 - 309924
SLW900-03 | 3380034500
2017-04-24

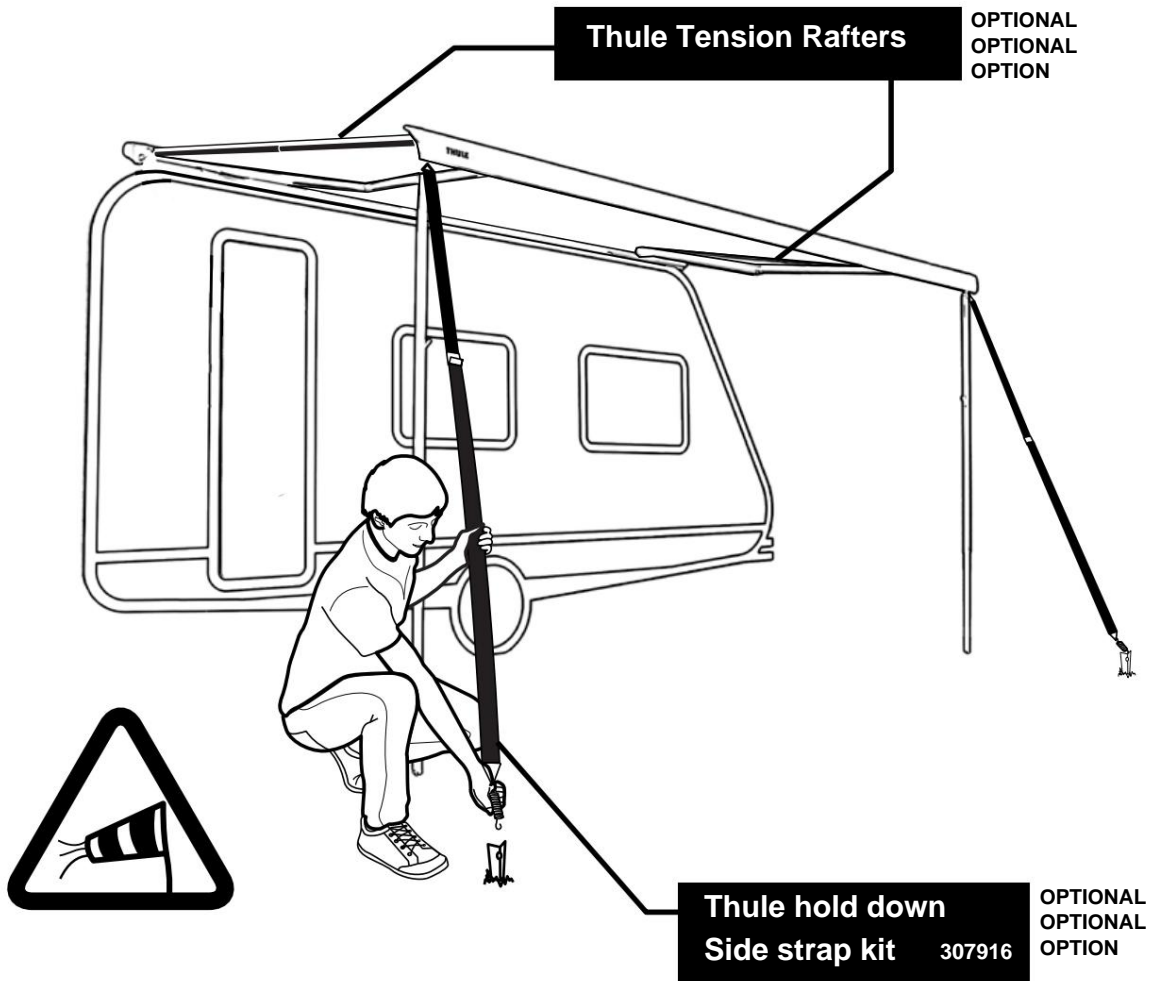
Bring your life
thule.com



1



!

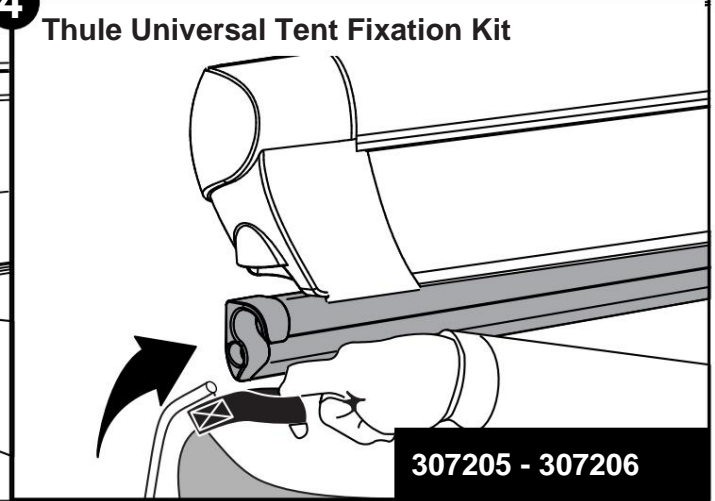
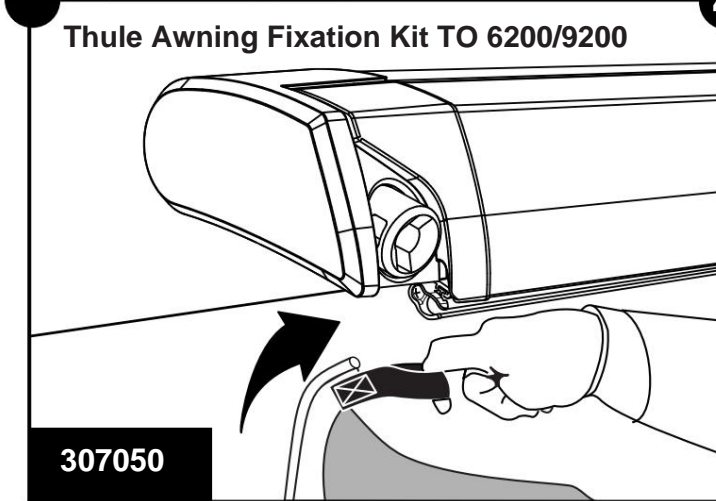
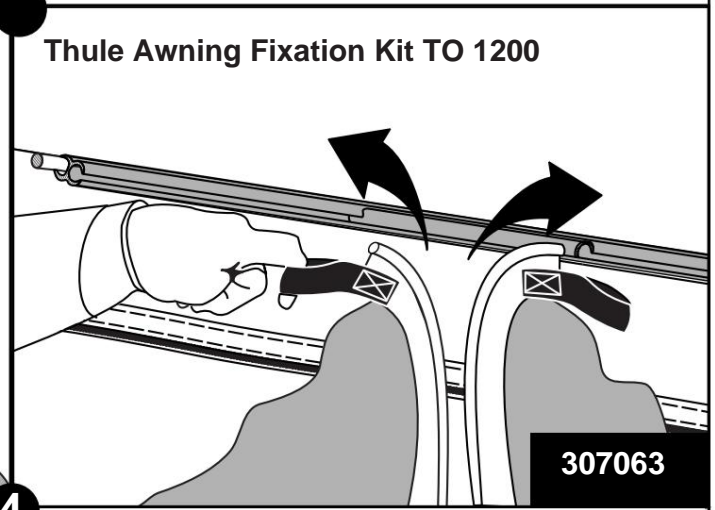
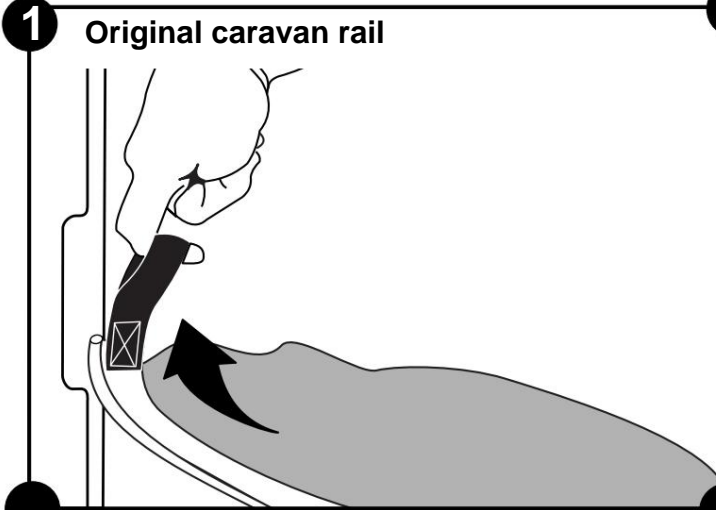
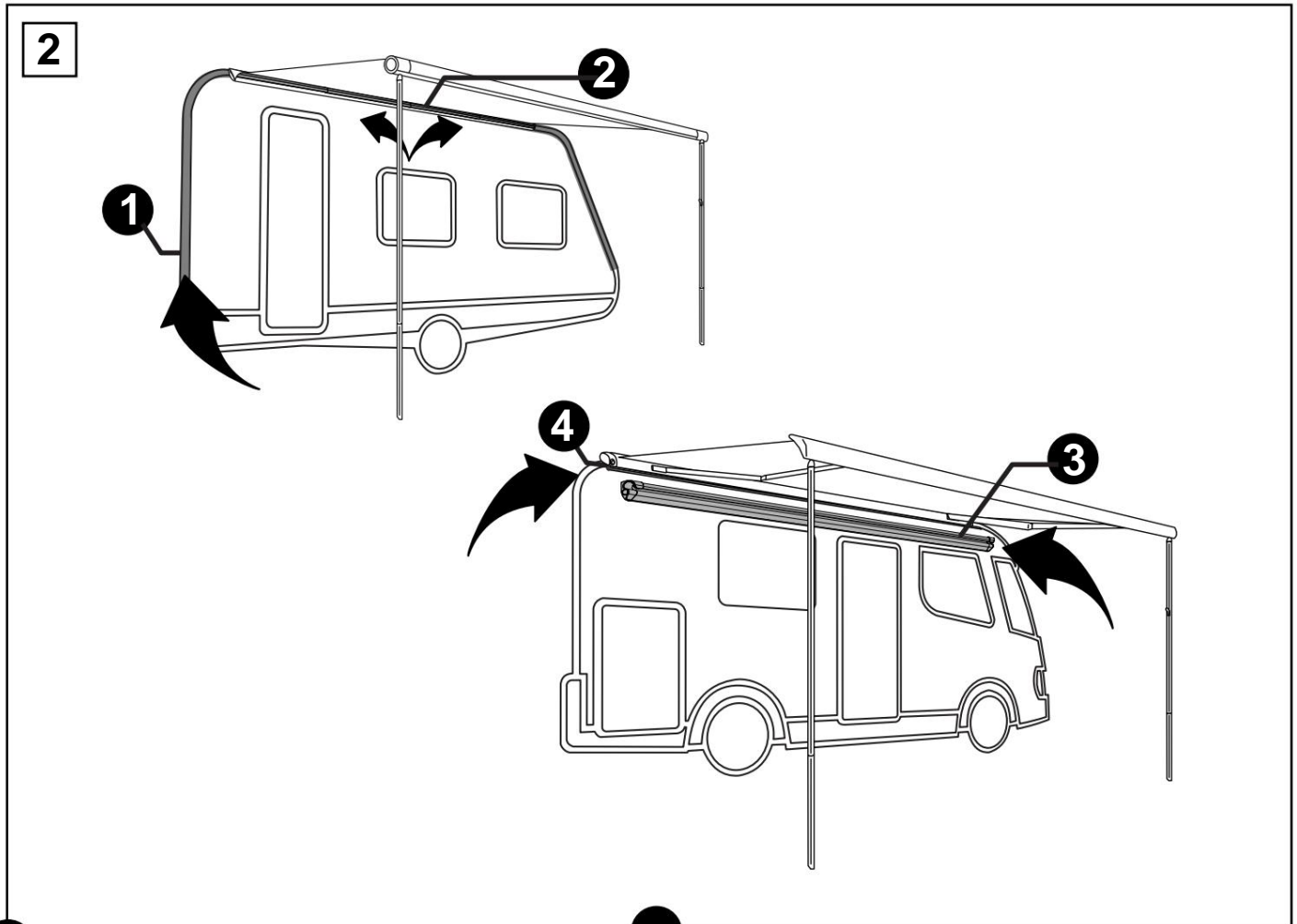


Thule Tension Rafter

OPTIONAL
OPTIONAL
OPTION

Thule hold down
Side strap kit 307916

OPTIONAL
OPTIONAL
OPTION



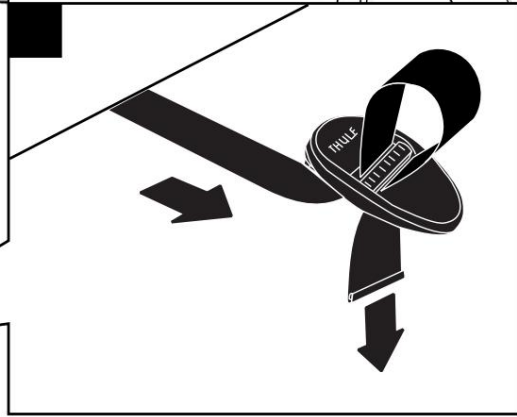
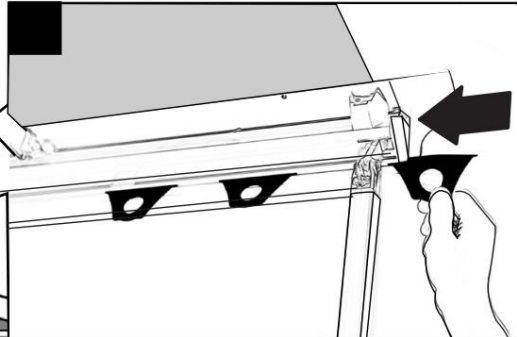
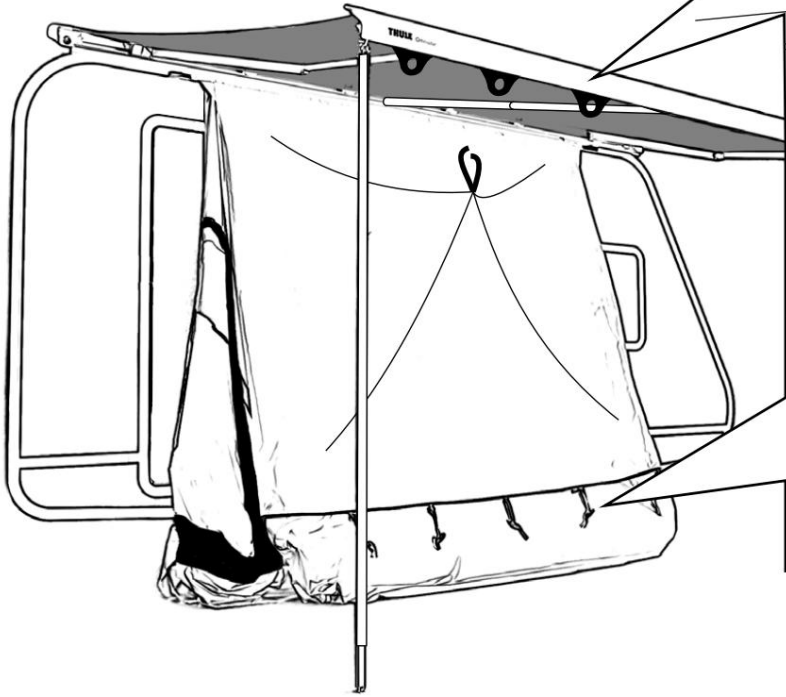
3



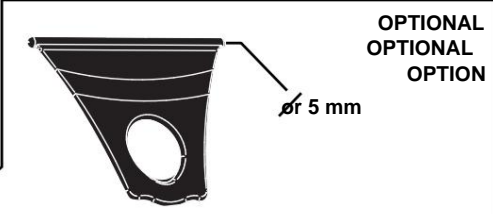
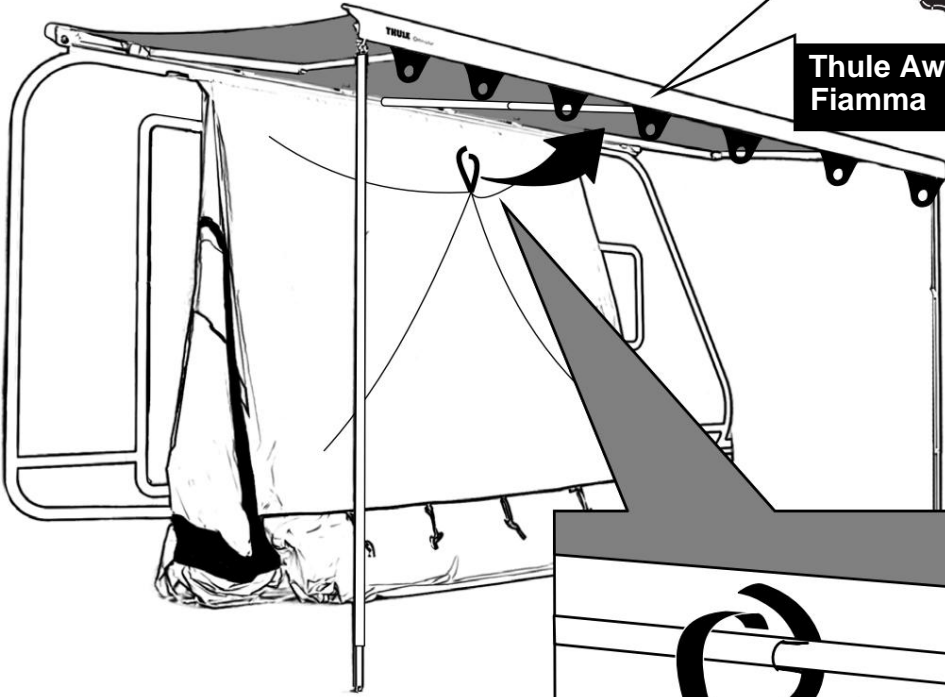
X8



X8



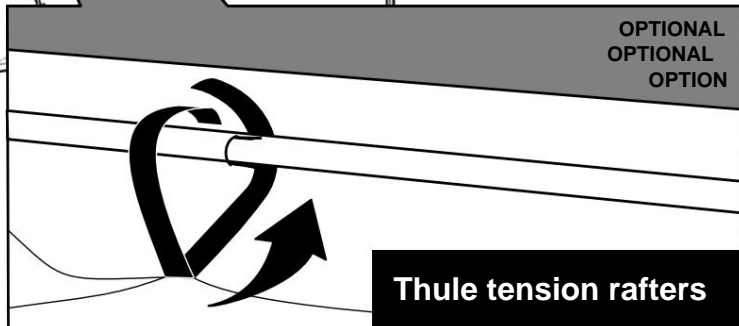
i



OPTIONAL
OPTIONAL
OPTION

∅ 5 mm

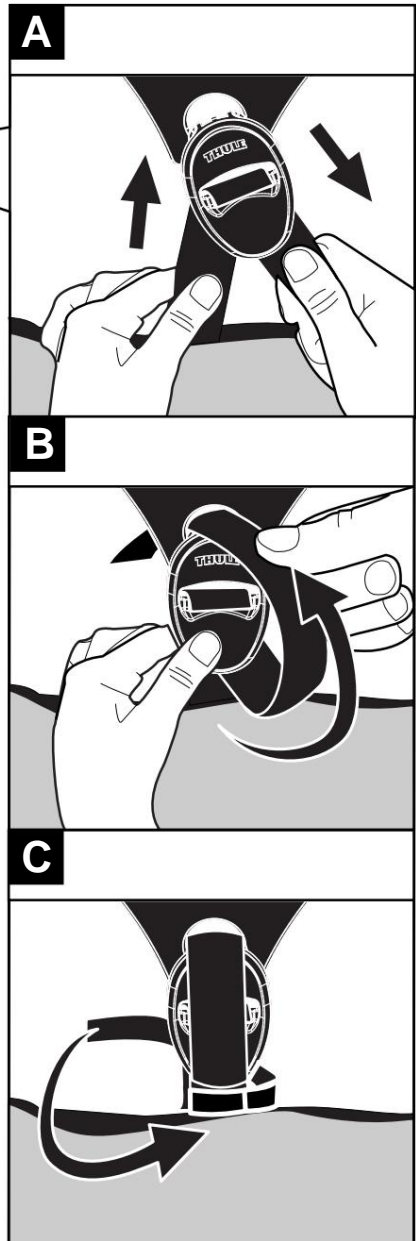
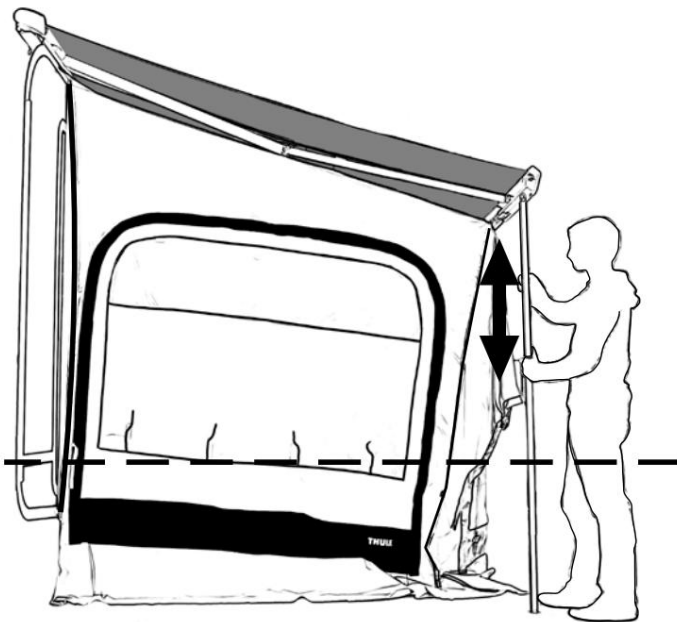
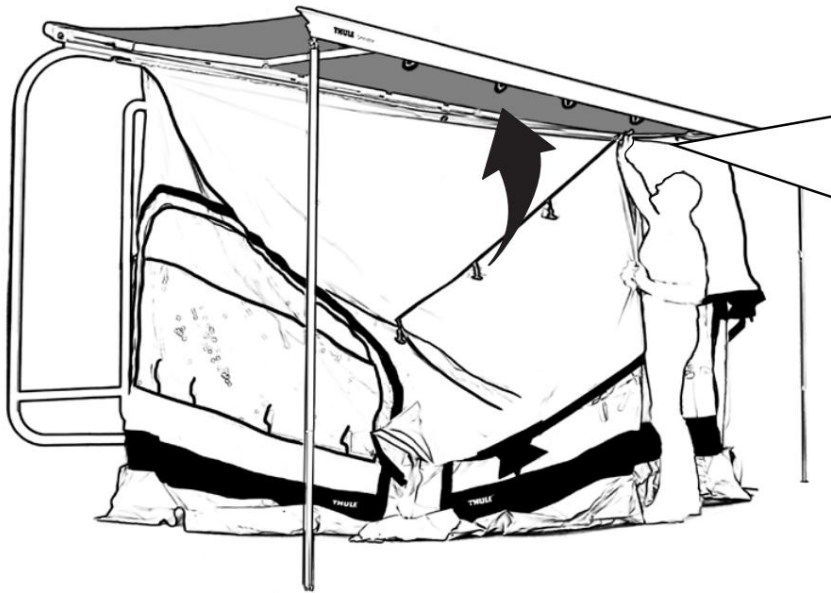
**Thule Awning Fixation Kit
Fiamma** 307061



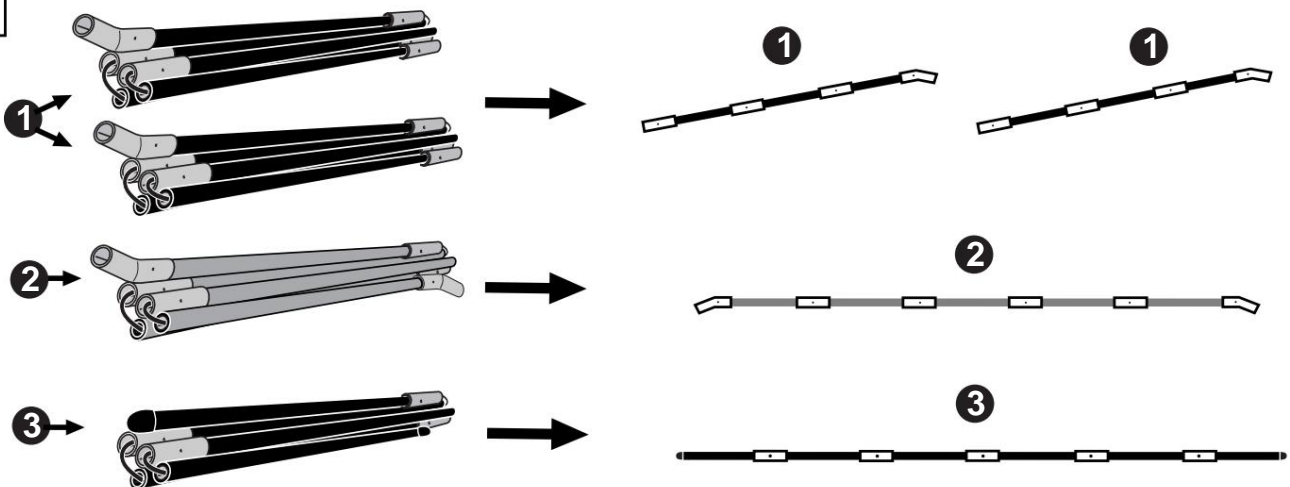
OPTIONAL
OPTIONAL
OPTION

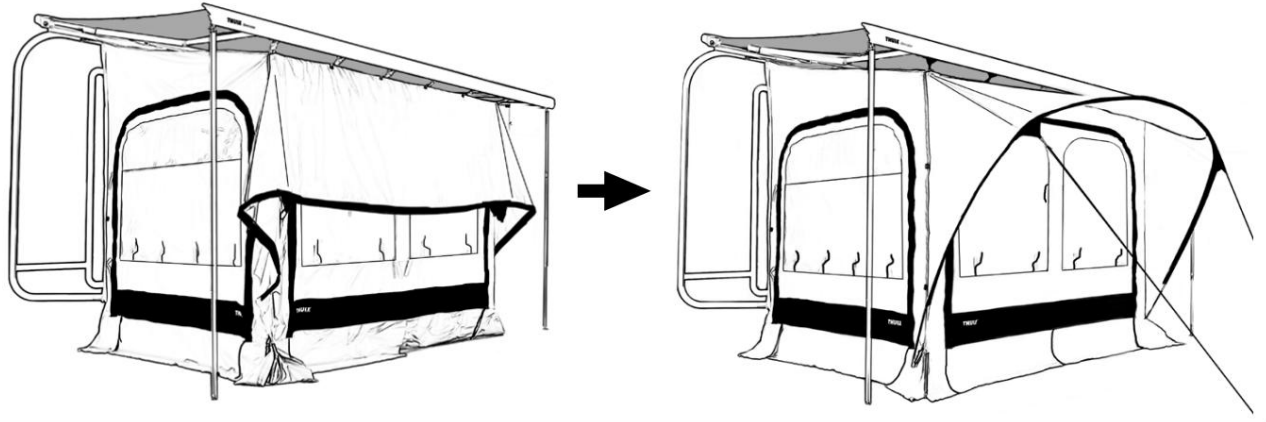
Thule tension rafters

4

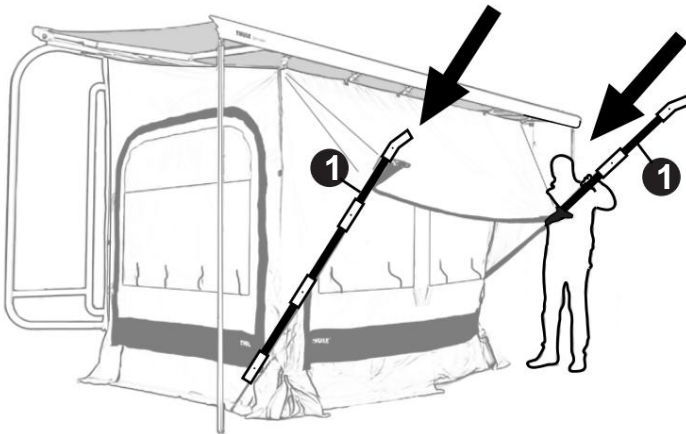


5

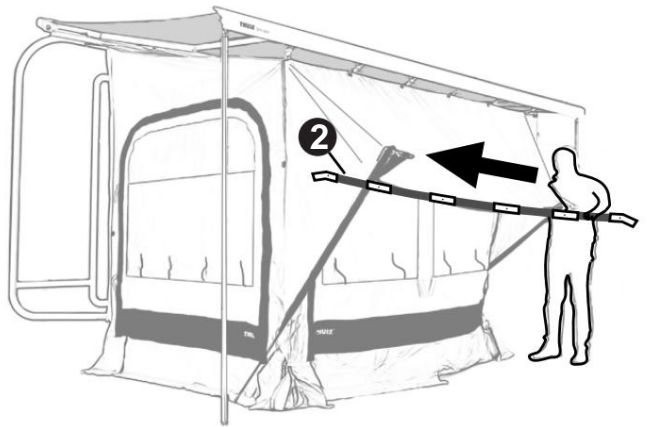




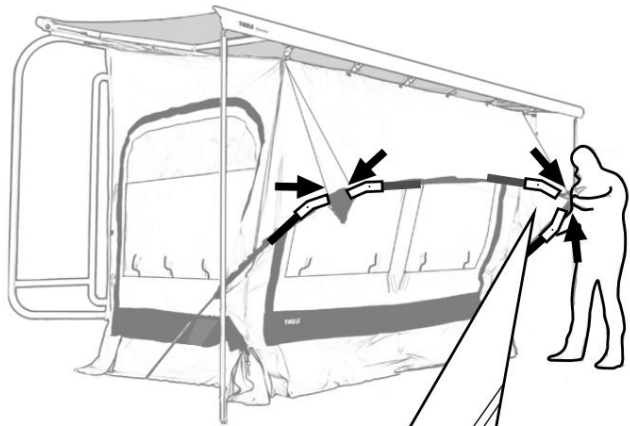
A



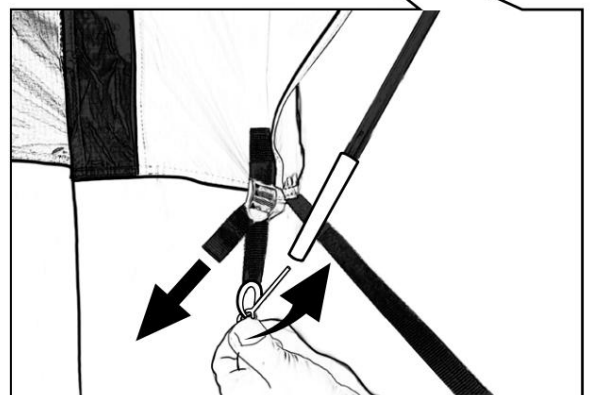
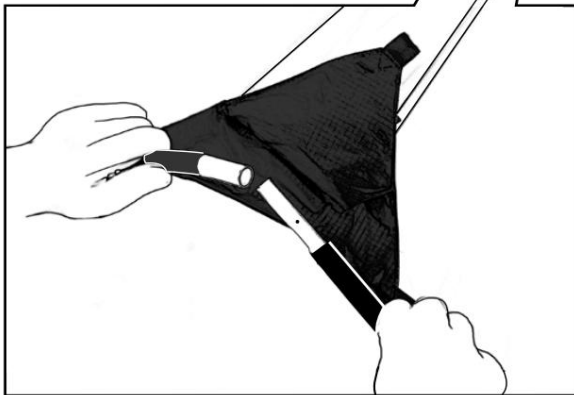
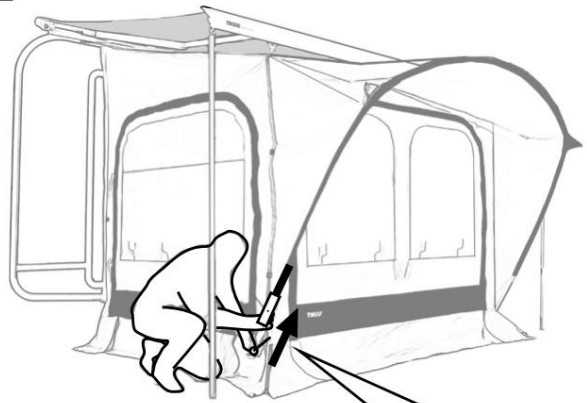
B

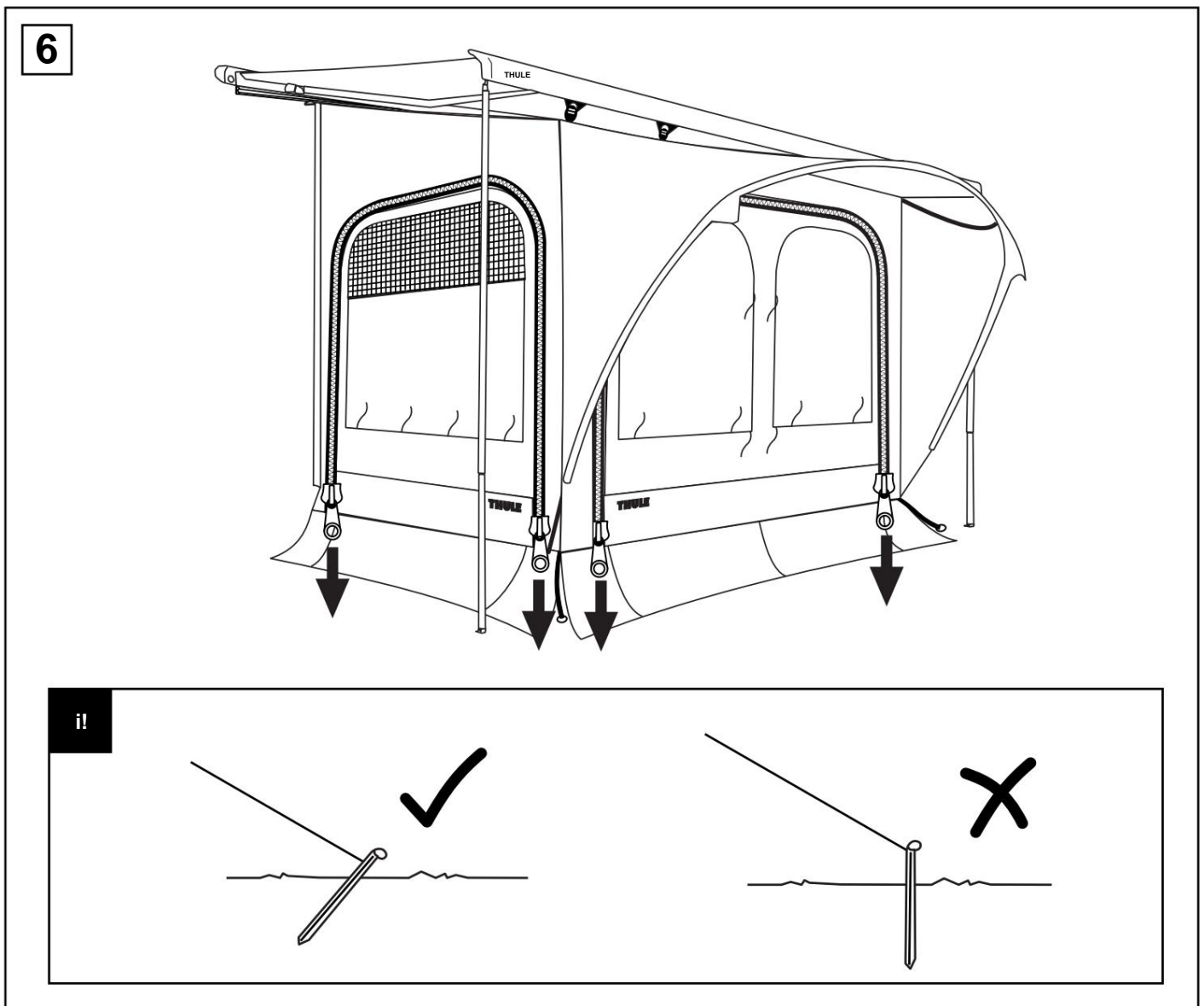
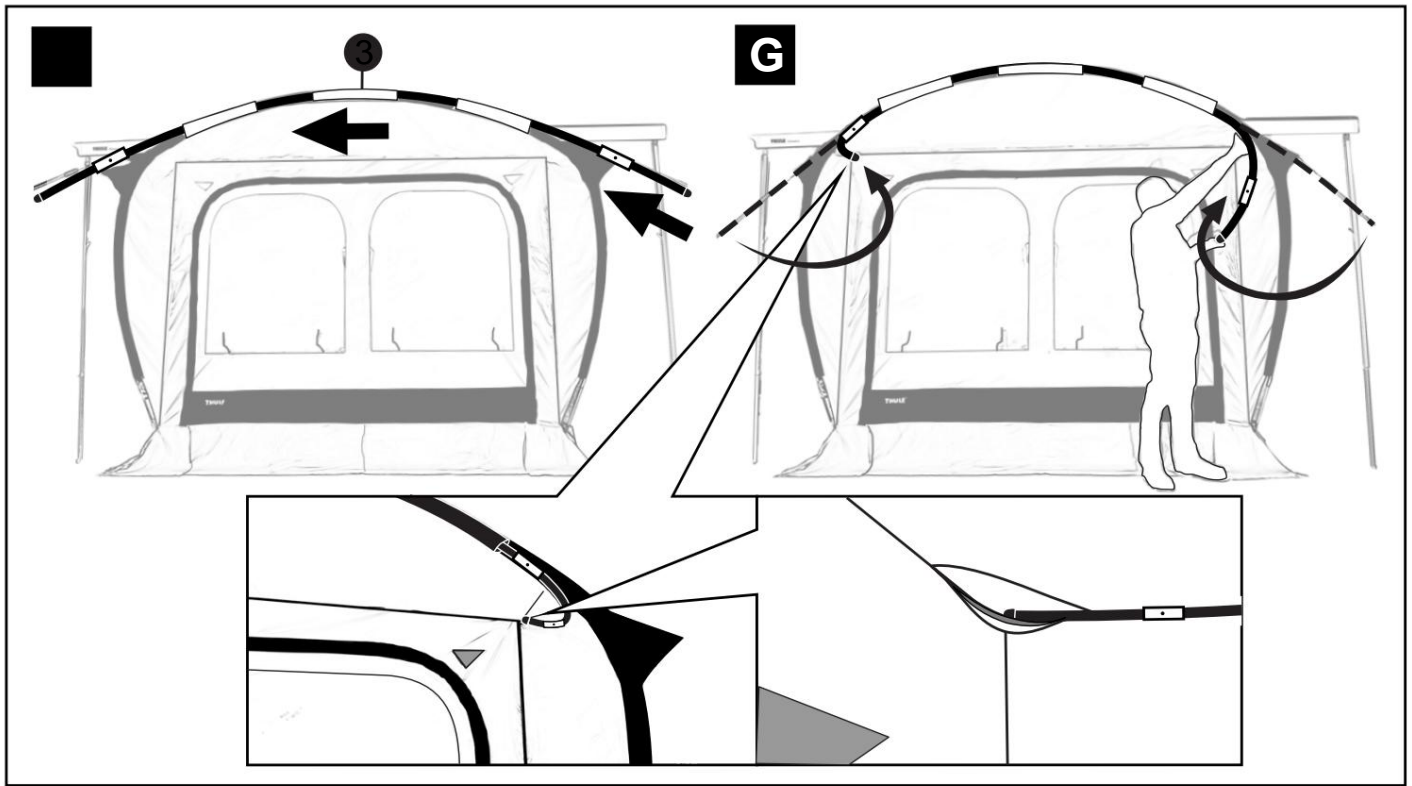


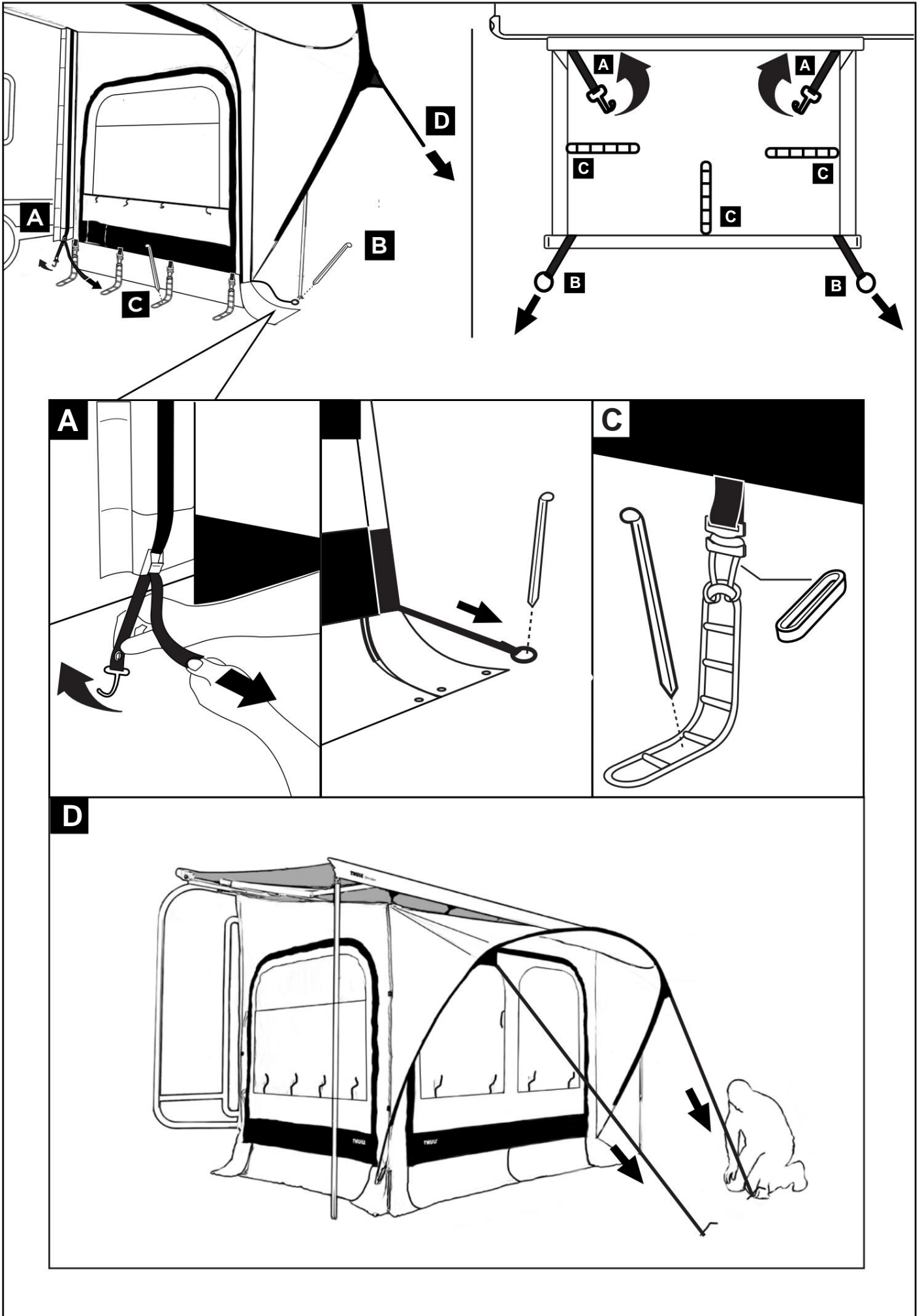
C

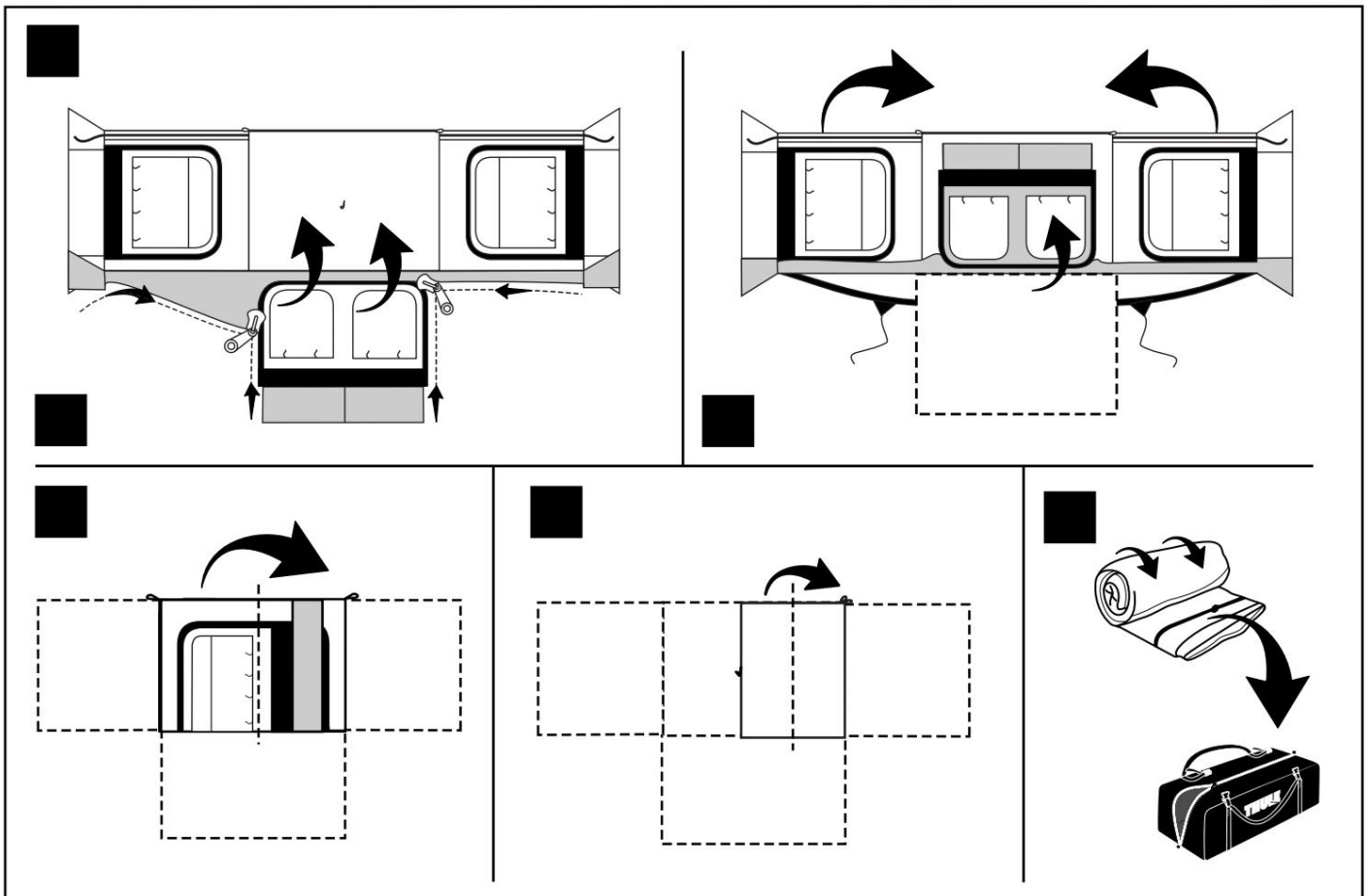
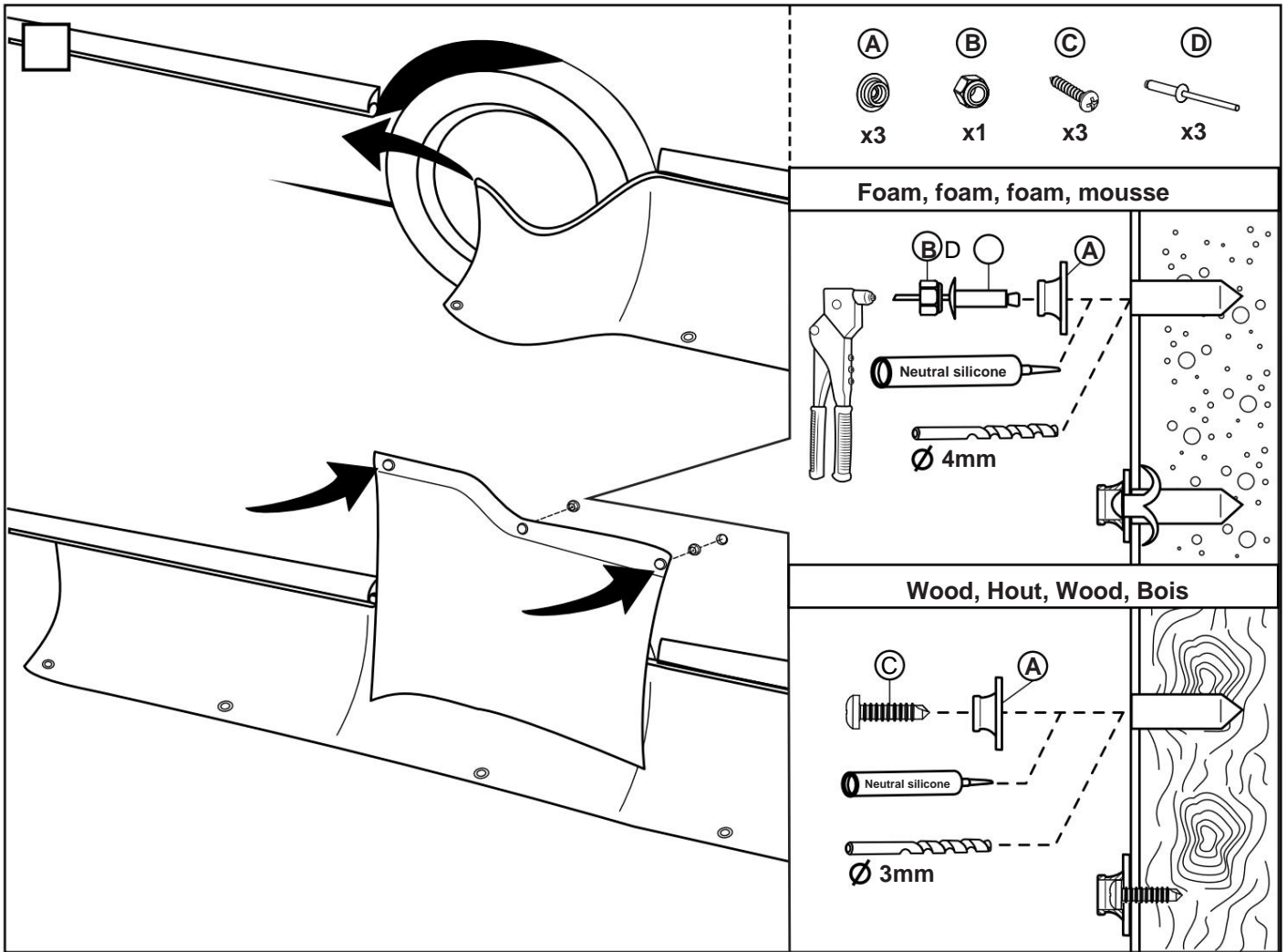


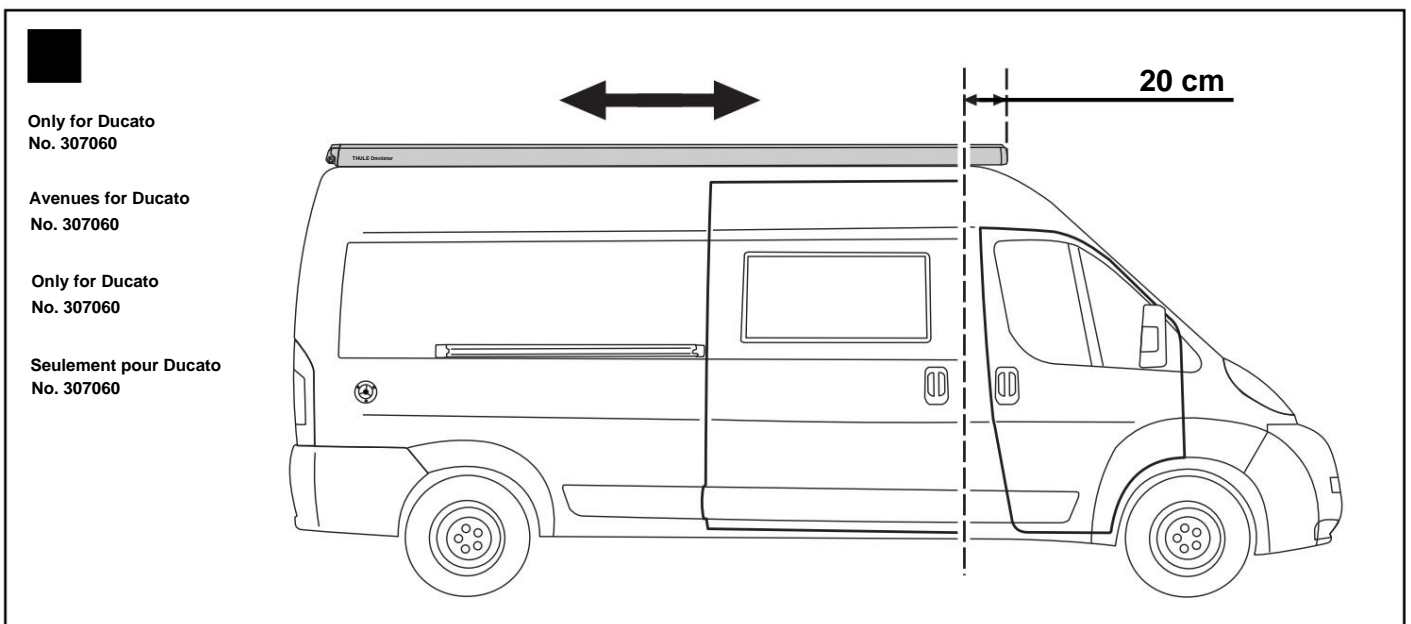
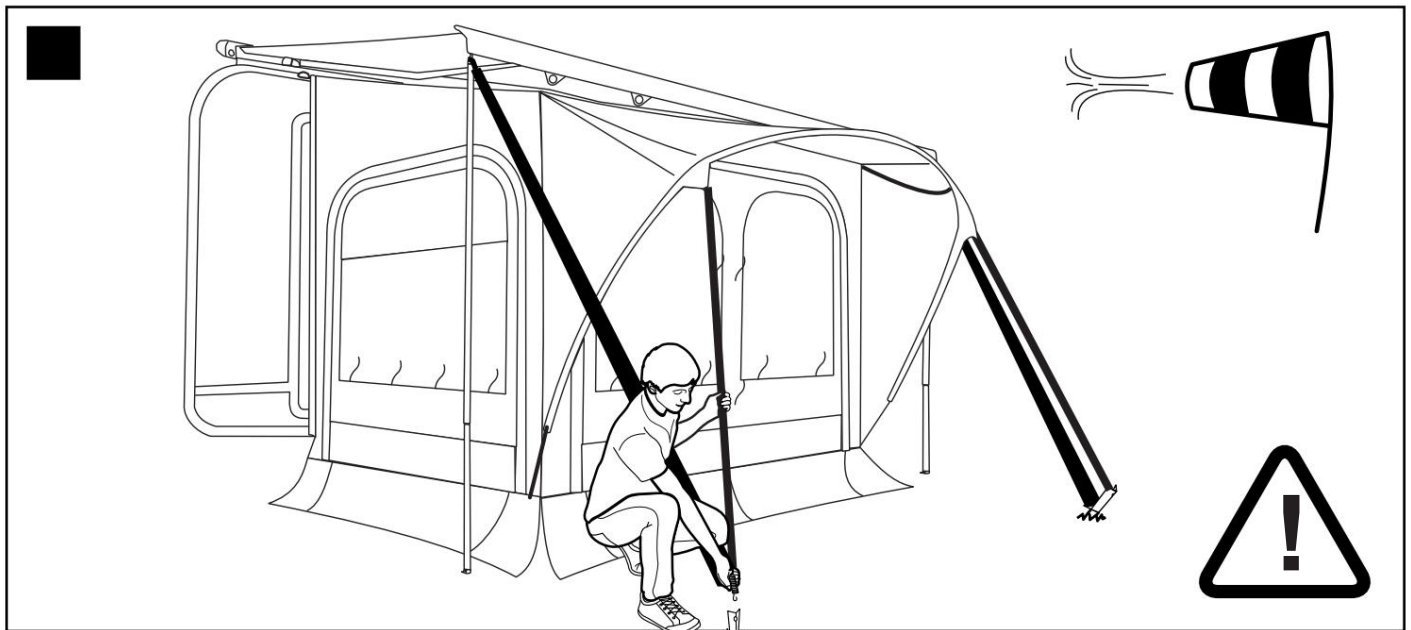
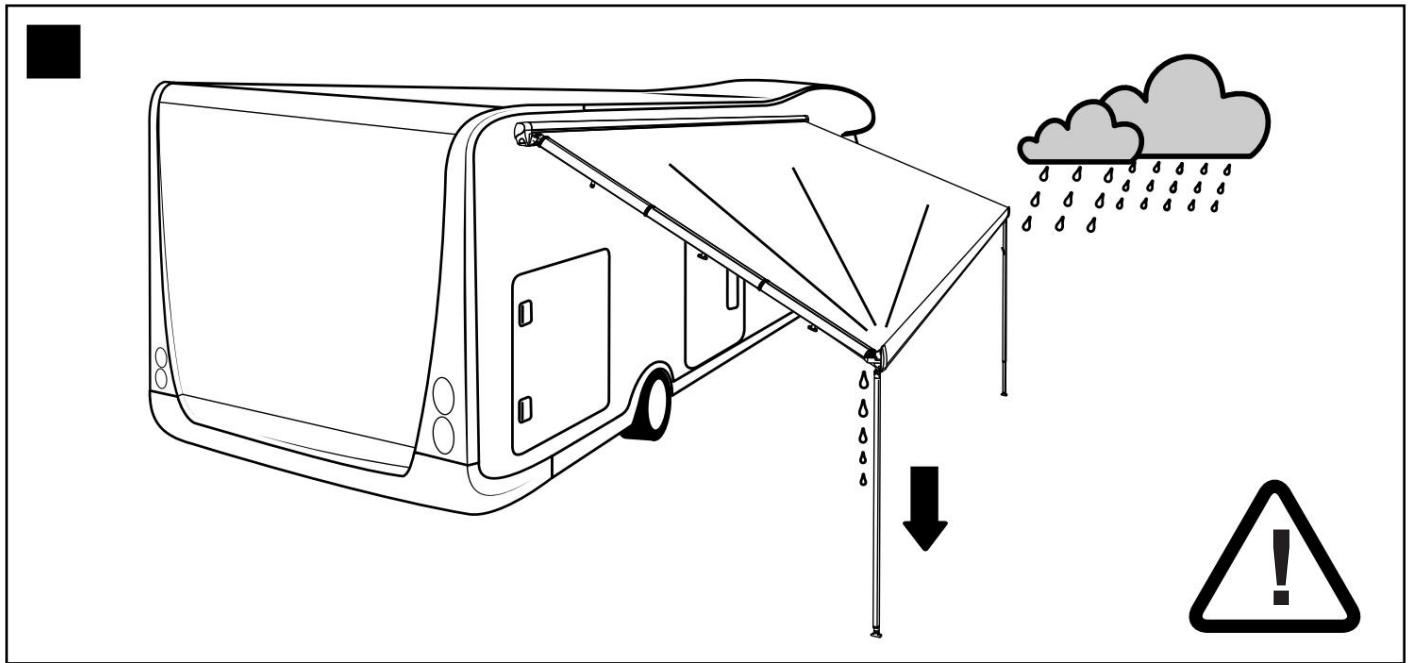
D











EN

Warranty -

Read the installation instructions carefully. Wrong installation, use or repair voided warranty. If recovery is needed, consult a dealer.

General remarks -

Check if the supplied Thule QuickFit suits the type, length, and the projection of the canopy.

Check that the height of the tent matches the mounting height of the caravan rail (height between the ground and the rail where the tent slides in).

- Make sure the vehicle is leveled.
- The sun can affect colors depending on usage.

Steps 1 to 7 1.

Open the awning to the max. Use a strap kit and a tension rafter on the awning before tightening the tent completely.

2. Slide the tendon of the tent through the rail that is located under your awning. Use the pull tab for better grip. For easy installation, do this with two people.
3. Slide the black pieces (with the hole) in the lead rail of the awning and the pieces with a hook on the straps of the tent.
4. Hook the tent to the front profile using the mounting pieces. Use both hands to clamp the tent. Put the tent leveled, but the awning under a slight angle for proper water drainage.
5. Unfold the fiberglass poles and slide them into the provided channels. Fold the sticks into place, but do not bend more than necessary. Treat the tent poles with care while dismantling the tent.
6. Fix the Thule QuickFit with pegs and pins, but always with closed zippers. Start at the back of the vehicle, proceed to the front, then put tension on all the walls and finish with two tensioning ropes at the front. Use proper pegs depending on the type of soil.
7. Assemble the windslip through the caravan rail. Attach the wheel cover using the screws (for walls with wood base) or rivets (for walls with foam base). Close the holes with silicone to avoid water infiltration.

Safety

Put one side of the awning lower so that when it rains the water can drain.

- When wind reaches 6 Bft. please store the tent and close the awning.
- Don't place heat sources near the walls or the roof.
- Avoid covering the refrigerator grille with the tent.
- Use a Strap kit and a tension rafter on the awning before tightening the tent completely.

Maintenance -

Make sure that before installing the tent, the connections to the vehicle are sufficiently clean.

Sand, dust or dirt could cause damage to your vehicle. When you stay for a long period, clean the tent a few times.

- Ensure that there are no hard objects on the windows of the tent during folding. This is to prevent impressions on the window.
- Let the tent dry thoroughly before storing.
- Use pure water or a dry brush to clean the tent.
- Condensation inside the tent is normal. Ventilate the tent adequately.

NL

Warranty

- Lees deze montage instructies adept. In the case of verkeerde assembly, the use of manual manufacture is subject to the warranty. India manufactures nodig is, raadpleeg a dealer.

Algemene opmerkingen -

Controleer vooraf of de geleverde Thule QuickFit past bij het type, de lengte en de uitval van de luifel. Kijk na of de hoogte van de tent overeenkomt met de montagehoogte van de caravanrail (hoogte tussen de ground en de rail waar de tent zal inschuiven).

- Zorg ervoor dat het prospectieve horizontaal state.
- The area can be touched on as a result of its use.

Steps 1 tot 7 1.

Draai de luifel maximaal open. Used a strap kit and a tension rafter on the luifel completely af te tension alvorens de tent op te tension.

2. Schuif de pees van de tent door de rail zich onder uw luifel bevindt. Gebruik hiervoor de trekklus. Doe dit bij voorkeur met twee persons.
3. Schuif de Zwarte stukken met het gat in de voorlat en de stukken met een haak op de belt van de tent.
4. Haak de tent aan de Voorlat met behulp van de bevestigingsstukken. Used both hands for the opening of the tent. Zet de tent waterpas en de luifel aan één zijde lager voor de goede waterafloop.
5. Ontplooi de Glasvezelstokken and Schuif ze in the Voorziene canals. Plooi de stokken op hun plaats, maar buig not verder dan nodig. Ga zorgvuldig om met de tentstokken tijdens het afbouwen van de tent.
6. Span de Thule QuickFit op en dit steeds met slotted ritsen. Begin astern het voertuig, ga door met de voorkant, daarna met het opspannen van de wanden rondom en eindig met de twee spantouwen aan de voorkant. Gebruik de juiste haring naargelang de soort van der Grond.
7. Monteer de windslip door de caravanrail. Bevestig de wiel flap, met behulp van de meegeleverde schroeven (for walls with base hout) or klinknagels (for walls with base schuim). Tightly gated altijd af met silicone om insijpelen te vermijden.

Safety instructions - Zet één

kant van de luifel wat camp zodat bij regen het water kan aflopen.

- Vanaf wind force 6 Bft. let the tent op te bergen and uw luifel te sluiten.
- Geen warmed up in the building of the walls of het dak plaatsen.
- Vermijd coverking van het koelkastrooster.
- Used a strap kit and a tension rafter om de luifel volledig af te spannen alvorens de tent op te spannen.

Onderhoud

- Kijk vóór het plaatsen of the tent long de connecties met het voertuig voldoende proper zijn. Zand, stuff of vuil zou pity can veroorzaken aan uw voertuig. Bij lengthy opstelling also clean tussentijds.
- Zorg ervoor that he geen harde Voorwerpen op de routes van de tent Liggen tijdens het opvouwen. Dit om afprinten in de Ruit te voorkomen.
- Laat de tent goed drugs alvorens op te mountains.
- Use zuiver water of een drug borstel om de tent te clean.
- Condensation in the tent is normal. Curse the tent on the voldo end wijze.

EN

Warranty

- Please read the assembly instructions carefully. If the product is incorrectly installed or modified, all warranty claims are void. In the event of repairs, please contact your specialist dealer.

General remarks - Check that the supplied Thule QuickFit corresponds to the awning type, length and extension. Check the mounting height of the awning (the measured height between the caravan rail and the ground).

- Make sure your vehicle is level.
- The sun can affect colors depending on usage

Steps 1 to 7

1 Turn the awning open. Always use a side strap kit to brace the Awning and a tension rod for optimum fabric tension.

2. Slide the piping from the tent into the caravan rail. Use the pull loop.
Best with 2 people.

3. Slide the triangular brackets with hole in the front bar, slide the bracket with hook onto the tent straps. .

4. Hook the tent firmly to the triangular brackets. Use both hands to tighten the tent. Put the tent parallel with the awning. Set the awning at an angle for better water drainage.

5. Unfold the fiberglass rods and slide them into the loops provided. Bend the fiberglass rods into the correct position but be careful not to overbend the rods. When dismantling the tent, carefully slide the fiberglass poles out of the loops.

6. Tighten the Thule QuickFit with the zippers closed. Catch up with the unbuckle on the vehicle and then the front, and then the middle. Finally, tighten the integrated storm ropes from the canopy.

7. Install the wagon skirt and wagon skirt over the wheel arch.

Security

- Set the awning at an angle for better water drainage.
- From wind force 6: dismantle the tent and retract the awning.
- Do not put heat sources near the walls or the roof.
- Avoid covering the refrigerator vent or other ventilation grilles.
- Always use a side strap kit to tension the awning and a tension rod for optimum fabric tension.

Maintenance

- Before assembling the tent, make sure that the pressure surface of the tent on the vehicle is clean. Sand, cloth or dirt can damage your vehicle. The areas should be cleaned regularly over a longer period of time.
- When folding the tent, avoid enclosing any hard objects or dirt roll up It can leave marks on the window film.
- Allow the tent to dry thoroughly before folding.
- Use only clean water and a dry, soft brush to clean the tent.
- Condensation inside the tent is normal. Ventilate the tent sufficiently.

FR

Garantie

- Lisez attention to the notices d'installation. Une mauvaise installation, use or proper réparation annule toute garantie. Si la réparation est nécessaire veuillez consulter votre revendeur.

Remarks generales

- Verify that the Thule QuickFit fourni correspond to the type, length and advance of the store. Vérifiez que la hauteur de l'auvent correspond to la hauteur de montage du rail d'auvent de la caravane (la hauteur entre le sol et le rail d'auvent).
- Assurez-vous que le véhicule soit à horizontal level.
- Dependent on the use of the soleil which affects the color of the toile

Steps 1 to 7 1.

- 1 Ouvrez le store à fond. Utilisez toujours une sangle anti-tempête ainsi qu'un tendeur avant de tendre l'auvent.
2. Glissez le jonc de l'auvent dans le rail qui se trouve sous your store. Tirez la sangle à la fin du jonc. Pour une installation facile, faites-le avec deux personnes.
3. Glissez les fixations noires avec l'œil dans le profil avant du store et attachez les pièces avec un crochet sur les sangles de l'auvent
4. Accrochez l'auvent sur les fixations de la barre de charge. Utilisez vos deux mains pour serrer les sangles. Mettez l'auvent horizontalement et abaissez à pied du store pour obtenir un meilleur écoulement de l'eau en cas de pluie
5. Dépliez les arceaux en fibre de verre. Glissez les arceaux dans les ouvertures prévus. Pliez les arceaux mais pas plus que nécessaire. Soyez prudent avec les arceaux lors du disassemblage de l'auvent.
6. Serrez le Thule QuickFit toujours avec des fermetures éclair fermées. Commencez à l'arrière du Véhicule puis continuez à l'avant et ensuite les côtés et terminez avec les deux cordes de tension à l'avant. Utilisez les piquettes en fonction du type de sol.
7. Glissez la bande anti-courant d'air dans le rail de la caravane. Fixez le cache-roue à l'aide des vis (pour les murs en bois) ou des rivets (pour les murs en mousse). Remplissez les trous avec du silicone pour éviter toute infiltration de l'eau.

Securité -

Abaissez un pied de store pour obtenir un meilleur écoulement de l'eau en cas de pluie. - À partir d'une force de vent de 6 Bft démontez l'auvent et fermez le store.

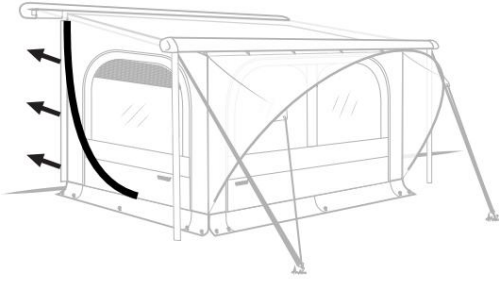
- Ne placez aucune source de chaleur près des murs ou du toit.
- Ne pas couvrir la grille du réfrigérateur.
- Utilisez toujours une sangle anti-tempête ainsi qu'un tendeur avant de tendre l'auvent

Maintenance

- Vérifiez bien avant le montage que les connexions entre l'auvent et la paroi du véhicule soient suffisamment propres. Le sable, la poussière ou la saleté peuvent endommager votre véhicule. Nettoyez et régulez en cas d'un long séjour.
- Assurez-vous qu'il n'y a pas d'objets extérieurs sur la fenêtre du tente lors du repliage. Ceci afin d'éviter des encoches dans la toile.
- Laissez sécher la toile complètement avant de la ranger.
- Utilisez de l'eau claire ou une brosse sèche pour nettoyer.
- From the condensation to the interior of the air vent is normal. Aérez suffisamment.

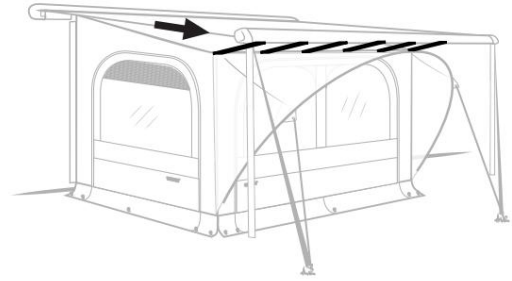
307053

Thule side tensioning kit



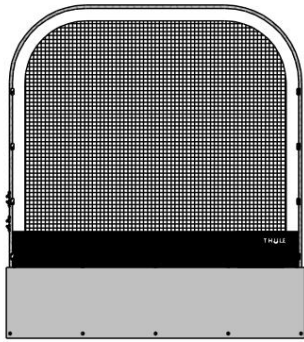
307052

Thule Projection Kit 2.75-3.00m



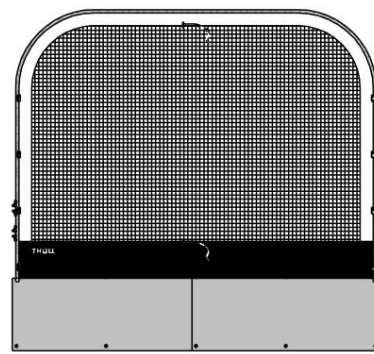
309925

Thule Mosquito Side



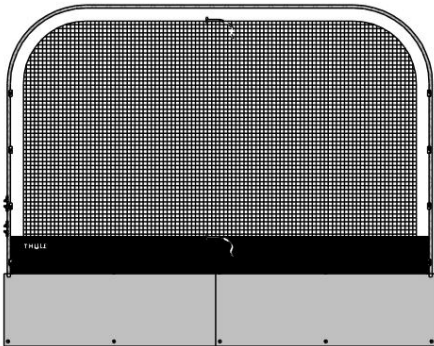
309926

Thule Mosquito Front 2.60m



309927

Thule Mosquito Front 3.10m



309928

Thule Mosquito Front 3.60m

